

Jewel inspired!


Makeup artist Pamela Taylor creates color palettes that look breathtaking both in front of and behind the camera.

BY PAMELA TAYLOR

Bliss

PHOTOGRAPHED BY DAREN THOMAS

JEWELRY CONSULTANT/STYLIST: NANCY ROSS
HAIR: BARBARA LHOTAN



THE BLEND OF SUBTLE
COLOR IN THE PEARLS
INSPIRE THE PEARL AND
VIOLET SHADES THAT
GIVE THE FACE A SOFT,
POLISHED FINISH.

BRIDAL GOWN:
JAMIE PESAVENTO COUTURE

MOONSTONE AND DIAMOND EARRINGS: BELLA CAMPBELL; 6 STRAND PEARL NECKLACE: PATRICIA VON MUSULIN; FRENCH CRYSTAL HAIRPIECE: FLOODS CLOSET

INSPIRED BY THE IVORY
JEWELS, THE FINISH
IS PURE AND MATTE,
ENHANCING THE
LIPS AS A FEATURE.

BRIDAL GOWN AND VEILS: MICHAEL SHANE BRIDAL; IVORY EARRINGS: PATRICIA VON MUSULIN; CELLULOID NECKLACE: PRIVATE COLLECTION OF NANCY ROSS



A FRESH,
ROMANTIC FINISH
ENHANCES
LUMINOUS
PEARL JEWELS.

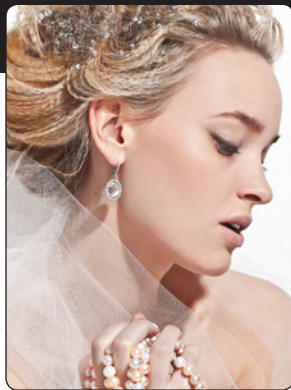


PEARL NECKLACE AS BRACELET: PATRICIA VON MUSULIN; DIAMOND RING COURTESY OF DELPHINE LEBLANC; WEISS CLASP: PRIVATE COLLECTION OF NANCY ROSS

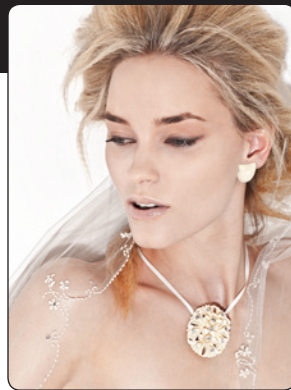
ALL JEWELRY COURTESY
OF THE VINTAGE PRIVATE
COLLECTION OF NANCY ROSS;
A SPECIAL THANKS TO SHOOT
ASSISTANT DELPHINE LEBLANC;
BRIDAL COUTURE, COURTESY OF
MICHAEL SHANE BRIDAL



PAGE 109



PAGE 110



PAGE 111



PAGES 112-113

makeup techniques

PAGE 109. This look was created to bring out the depth of the metal in the jewels and highlight the eyes.

Foundation: Skin is prepped using a pre-base prior to makeup application. A crème tinted smoothing foundation is applied to reduce freckles and smooth the skin.

Crème blush: A tint of deep violet crème blush is gently blended and applied to the apples of the cheek using a dampened sponge. A pearl luminizer highlights cheekbones and upper brow bone areas.

Face: The face and cheekbones are powdered to set the crème. Then the facial structure is shaded using a contour powder.

Eyes: Lids are color washed in a pure yellow to enhance the model's golden-green eyes. A smoky black and silver liner mimic the natural shape of the lower lid.

Lips: Lips are painted with a sheer pink pearl gloss, allowing the natural lip color to peek through as an undertone.

This look was created to bring out the depth of the metal in the jewels and draw attention to the eyes.

PAGE 110. The blend of subtle color in the pearls inspire the pearl and violet shades that give the face a soft, polished finish. Skin is tinted a shade deeper using a smoothing foundation.

Structure: A pearl crème highlight enhances the upper cheekbones and center bridge of the nose. The face is powdered to set, then temples and cheekbones are contoured using a taupe brown shading powder.

Cheeks: Cheeks are tinted with temples, and cheekbones are contoured using a taupe brown shading powder and plum-rose crème blush, then blended to a sheer wash.

Brows: Eyebrows are color brushed with a deeper rust-blond shadow to thicken, then brushed upward.

Eyes: Eyelids are enhanced with a soft tan shimmer shadow. Lower lids are lined with a blended shade of violet and black.

Lips: A rose crème lip color glosses and tints the lips.

PAGE 111. Inspired by the ivory jewels, the finish is pure and matte, enhancing the lips as a feature.

Foundation: A highly pigmented crème foundation is mixed to match and blended to create a smooth finish to the face.

Cheeks: Cheeks are color washed in a pale beige pink crème cheek color. An ivory beige cheek highlight is applied to the upper cheekbone.

Set: The base and cheek color are powdered to set, creating a matte finish for the face.

Eyes: To enhance the deep blue color of the eyes, a rich blend of rust and copper brown shadow is applied to the lid, mixed with a white shadow to lighten the inner third of lid. The eyes are then lined with the deeper rust and black cake liners, adding a sweeping finish to the outer edge. Matte black waterproof mascara enhances the natural lashes.

Lips: Following the application of a sheer beige lip crème, a generous application of pure gloss is applied to the center lip areas.

PAGE 112-113. A fresh, romantic finish enhances luminous pearl jewels.

Foundation: Skin is tinted with a water-base foundation, kept natural to allow the freckles to peek through. A crème bronzer is applied to the cheekbones and facial areas to give the skin a tint of tan.

Brows: Eyebrows are gently tinted with a blond-brown powder, then shaped.

Eyes: Soft ivory pearl shadow mimics the pearl bracelet, and a cocoa brown shadow is applied to the inner third corner. Eyes are finished with a generous application of waterproof deep cocoa mascara.

Lips: A crème lip tint in neutral beige-pink is applied to coat the lips. A soft taupe liner outlines the natural shape of the lips. ■

Pamela Taylor is an internationally recognized authority on editorial print and fashion makeup. Known for her hydration technique, she is often referred to for current makeup trends and techniques. Based in New York City, Taylor boasts an extensive celebrity clientele. She is owner and director of the Pamela Taylor Makeup Academy and Studio of New York. For more information, call 212.620.5792 or visit www.pamelataylor.com.